

West Nautical – A Yacht Management Case Study

What is involved when commissioning new builds? West Nautical are here to guide us through, with a yacht management case study.

One of [West Nautical](#)'s yacht management services is new build project management. Today, we will gain an insight into this through looking at a real yacht management case study.

The process ranges from sourcing quotes from multiple suppliers for comparison purposes, to having someone on the ground managing the day-to-day operations. Therefore, West Nautical have the experience to guide you through every step of the yacht management process. Which is naturally an involved and exciting process. West Nautical have overseen many launches, working closely with the very best designers and builders to manage construction.

West Nautical have become recognised as one of the most respected, trusted, knowledgeable and accountable firms in yachting – largely due to our relentless determination to act in our clients' best interests. Their approach and attitude is transparent, focused on providing the best service for their clients.

So, what exactly happens in the yacht management process?

West Nautical are here to tell you about their role in the successful project management of the new build motor yacht

KD.



M/Y KD

M/Y KD is a 53-meter motor yacht built by Sanlorenzo in Italy, delivered in June 2018. She had her interior and exterior designed by Officina Italiana Design. KD is hull number 2 of the SL52 range.

The Beginning

Before the build commenced, the project management team went to visit hull no 1 of the SL52 range, Seven Sins. This was to identify any changes that needed to be made to the structure or general arrangement, for example, they quickly identified that a change in the arrangement of the engine room was needed. This would allow the engineers to carry out more advanced servicing and maintenance. And therefore, reduce the time KD would need to spend in shipyards in the future.

During



Yacht Construction

The West Nautical team were on site of the build daily to ensure all details were correct. And, to minimise issues that may arise.

The Client wanted a custom designed interior from a specialist subcontractor. This additional layer of complexity had to be managed by the team to ensure the project stayed on time. And, within the allocated budget.

The client also wanted a custom 7.5-meter tender by Wooden Boat, with the inclusion of Bentley taillights. This was to give the tender a unique feature. The team were responsible for the agreements between Bentley and Wooden Boats to facilitate the build of the tender.

During the build, the team maintained total transparency with the owner. The owner attended the weekly project meetings and was provided with any and all documentation. Including: defect lists, snagging lists, and monthly reports in order to keep him constantly updated on the build.

The Result



M/Y KD Launch

This constant pressure on the shipyard from the team was good. It meant no part of the build was overlooked, and the project stuck to the build schedule so it could be used for the summer as requested by the owner. KD was also shown at the 2018 Monaco Yacht show.

As a result of the happy owner, knowledge of the Sanlorenzo models and technical expertise of the team, West Nautical have successfully grown their newbuild portfolio across nearly the entire Sanlorenzo fleet. In addition to managing other new build projects with most large superyacht shipyards including

sunseeker, Fairline, and Benetti.

We hope you have enjoyed this yacht management case study!

West Nautical deliver on time and on budget working with the world's most iconic shipyards. Both in Northern and Southern Europe, including Mulder, Benetti, Amels, Mondomarine, Sanlorenzo and Sunseeker.

One of the greatest pleasures of commissioning a new yacht is seeing the vessel constructed. From the keel up, West Nautical will ensure you are at the centre of the project. And, as actively involved in the process as you wish to be.

Other new build projects include 29m Mulder M/Y Firefly, 40m Sunseeker 131 M/Y Lady M, 55m Amels M/Y La Familia and the conversion build of 69m Damen M/Y Game Changer.

If you have any questions please do get in touch with West Nautical's management team on management@westnautical.com

And, for more of the latest industry news and content, click [here](#).

Project Cosmos: 80m Heesen Vessel Leaves Her Shed

Last month we saw the 80m, [Heesen](#) Vessel, Project Cosmos, now known as Galactica hit the waters and leave the Dutch company's shipyard in Oss. Today, the 7th of January 2022 marks the day the 80m vessel left her shed. Weighing in at

1,700GT vessel can reach a maximum of 30 knots. During the next year, the largest and fastest all-aluminum yacht to ever be built will for sure turn some heads.

<http://www.instagram.com/p/CYbMJPRMxZG/>

The superyacht's great size and high speed are what make her so impressive. This was achieved through the use of Van Oossanen's Fast Displacement Hull Form and the expertise of Heesen's naval architects. The yacht is powered by traditional diesel propulsion, consisting of four engines, two gearboxes, variable-pitch propellers, and innovative Promas rudders.

<http://www.instagram.com/p/CYbWS4esRbE/>

Heesens CEO Arthur Brouwer. "Project cosmos is unique not only for our shipyard, as she is the largest we have ever taken on and represents the pinnacle of our achievements to date. Cosmos is also unique in the industry – the largest and fastest aluminum yacht in her class ever built."



Credit: Dick Holthuis

[Winch Design](#) has crafted a beautiful exterior, with clean lines, a sporty look, and extensive use of glass creating a timeless profile. The light and calming interior design was penned by [Sinot Yacht Design](#). A neutral palette, with accents of blue hues, help achieve a relaxing environment that helps guests feel immediately at home.

Project Cosmos will undergo intense sea trials in the North Sea in February 2022 before an April 2022 delivery.

[Click here](#) for more superyacht news.

5 New Superyachts to Look Out for in 2022

With the high demand for luxury vessels leading to a record-breaking number of new superyachts under construction, 2022 is looking to be a year full of boat debuts. With many projects set to reach important milestones, we are expecting lots of news from all the major shipyards. Here are 5 of the most exciting superyachts to look out for in 2022.

[Feadship](#) 1010



Photo: Tom Van Oossanen

At 118m long, project 1010 interestingly marks Feadship's largest vessel to date. Since the project's announcement, the renowned shipbuilder is working towards a 2022 delivery. October 2020 saw the vessel hit the water for the first time when it was first launched in the Netherlands, but 2022 is when completion and delivery are scheduled. Although very little is known about the details of the superyacht, we expect to hear more as we enter the new year.

Oceanco Y721



Photo: Tom Van Oossanen

Set to become the third 100+m sailing yacht in 2022 is Oceanco's Y721. She will take Black Pearl's title of the second-longest sailing yacht in the global fleet. When delivered, there will only be three sailing yachts measuring over 100m, with the biggest being Nobiskrug's 142m Sailing Yacht A. Reportedly commissioned by Amazon founder Jeff Bezos, Y721 is the longest yacht ever built in the Netherlands. As well as this, it is also Oceanco's largest-ever build.

Heesen Cosmos



Photo: Dick Holthuis

After her Spring 2022 delivery, Heesen's 80m superyacht Cosmos will be the biggest and fastest all-aluminium superyacht in the world. This is due to her maximum speed of 30 knots and 1,700GT. Cosmos features an exterior crafted by [Winch Design](#), which comprises clean lines, a sporty look and extensive use of glass, achieving a timeless profile. Expect to see her undertaking North Sea trials in early 2022 ahead of her delivery.

[Lurssen](#) Northern Star



Photo: Lurssen

Amongst the numerous projects under construction at Lurssen is Northern Star, a 107m explorer superyacht. Once delivered, she will be used to explore the farthest reaches of the globe. Northern Star (previously named Project Icecap) is a diesel-electric hybrid that accommodates up to 20 guests in 10 staterooms. She sports a rugged design by [Salt Ship Design](#) and is due for delivery in 2022.

[Amels](#) Custom 78



Photo: Damen Yachting

With a gross tonnage of 2,850, once the Custom Amels 78m delivery is complete, she will be Amels' largest vessel to date in terms of GT. The superyacht features exterior and interior design by Espen Øino and Zuretti Interior, respectively. Øino has stated it is "a unique project" which features a spacious, open-top deck, large aft pool, and wide side decks. She accommodates 14 guests in total whilst also housing 26 crew. The superyacht was recently spotted during her sea trials in September, ahead of her delivery in 2022.

Read about the [largest yacht deliveries in 2021 here](#)

5 Of The Largest Superyacht Deliveries In 2021

2021 has been an unbelievable year for the Superyacht Industry. There have been a number of great superyacht deliveries large and small and the big builders are pumping out superyachts faster than they ever have before. With business booming more than ever, the market has grown, and so have the yachts. Let's look back on the past 12 months and at 5 of the largest superyacht deliveries in 2021.

1. SOLARIS

One of the most exciting superyacht deliveries of 2021, [Lloyd Werfts](#) 140m 'Solaris'. The 27th of May 2021 marked the delivery of one of the world's most luxurious explorer yachts. Owned by Abramovich, her volume of 11,011 GT ranks her as one of the largest Superyachts to date!



2. NORD

The 142-meter [Lurssen](#) Yacht Nord was delivered on the 19th of February 2021. With a top speed of 20 knots and a gross tonnage of 9,250, it's safe to say she has certainly turned a few heads this year. And let's not forget her facilities: a helicopter hangar, two helicopter platforms, a swimming pool, two elevators, a gym with a sauna, and a cinema are all among the features of this stunning vessel.

3. Project Y719

[Oceanco's](#) 117-meter project Y719 is the largest yacht under construction in the Netherlands and the largest launched from

the yard's Alblasserdam facility. The yacht's details are scarce, but we do know that she features exterior design by [Espen Øino International](#), and an interior designed by [Sinot Yacht Architecture & Design](#).

4. APH0

[Lürssens](#) 115m Aph0, previously known as 'Project Enzo'. Exterior and interior design by Nuvolari Lenard, with interiors in collaboration with Simone Feltrin. Although she's not currently available for charter, it is rumored she will be available for select charters starting in 2022.

5. Viva

The 94m [Feadship](#) hybrid yacht was delivered in June of 2021, following her launch earlier in the year. Hybrids are on the rise and it's no surprise when they can reach a top speed of 20 knots in diesel mode! Viva's exterior design was penned by [Azure Yacht Design](#) and Studio De Voogt and an interior by [Peter Marino](#)



What a lineup! It is safe to say 2021 has seen some of the best and largest superyacht deliveries and we cannot wait to see what 2022 has in store for us.

For the latest industry news, [click here](#).

Turquoise Yachts Announce New 65m M/Y Neptune

[Turquoise Yachts](#) have announced M/Y Neptune, a 65m superyacht designed to offer great value in its highly competitive 55-65m category. The design marks a collaboration between the Istanbul-based shipyard and Italian design house [Hot Lab](#).



Picture: Turquoise Yachts

The sleek and stylish vessel resembles a torpedo slicing through the water. This, paired with low bulwarks accentuating the sheerlines on each deck gives Neptune the illusion of even more length. The use of glass on board allows for uninterrupted vistas, so whether guests are cruising the Caribbean or the Baltic, the view will always be immediately available.



Picture: Turquoise Yachts

Neptune's guest sleeping facilities comprise 1 owners' suite, 2 VIP cabins and 4 guest cabins. Elsewhere, she houses a cinema, beach club and gym for guests to enjoy during their trips. Over 7 crew cabins and a designated cabin each for the First Officer and Captain, the vessel accommodates 16 crew.



Picture: Turquoise Yachts

Main Specifications

Length: 65.0 m / 212.88 ft

Beam: 11.8 m / 38.6 ft

GT: 1328 approx

Material: Steel hull and aluminium superstructure

Exterior Designer: Hot Lab

Interior Designer: Hot Lab

Naval Architect: Turquoise Yachts and Azure Naval Architects

To read about other new builds and designs, visit our [new](#)

36m Phi Chase Boat 'Phantom' Launched By Alia Yachts

The 36m chase boat 'Phantom Phi' has been launched by Turkish shipbuilder Alia Yachts. It is a companion vessel to [Royal Huisman's](#) Phi and is "literally a shadow of the longer beauty queen," says Cor D. Rover, her exterior stylist, who also designed Phi.



About The Design

Speaking further on Phantom's design, Rover says:

"we simply looked at the design DNA that we gave mothership Phi, which consisted of a set of organically curved, sheer lines, contrasting black and blue surfaces, and sharp-edged and curved wing stations. We applied this DNA to Phi Phantom as much as we could, when time permitted. Alia did a fantastic job in sculpting our ideas in aluminium without the forgiving help of filler material!"

Features

The vessel will house many toys and tenders for the owner of Phi and their guests to enjoy whilst voyaging across the world. Amongst the toys and tenders are a 12.3 Spirit tender, jet skis, bikes and the space to accommodate a car. Phantom will also hold extra fuel and additional laundry facilities, which increases Phi's guest capacity. Three cabins will house three permanent crew members, with an extra cabin for visitors. Additionally, Phantom accommodates a spacious crew mess and galley for the comfort of the crew.



To keep up to date with the latest Superyacht Content News,
click [here](#).

Sign up to our Newsletter below:

Newsletter Signup

▪ Your Name

First

Last

▪ Your Email*

Submit

Benetti B.Now: First 50m Superyacht in Series Unveiled

[Benetti](#) has unveiled 'Iryna', the first 50m superyacht from its B.Now series. The steel vessel is one of four models in the series which all feature an exterior design by [RWD](#). The B.Now series, which aims to appeal to the most forward-thinking owners, includes yachts with lengths of 50, 58, 66 and 72 metres.



Photo: Benetti

The B.Now 50m model features an array of luxuries, including a 36-square-metre beach club and an infinity pool that looks like an extension of the stern deck. Designed with outdoor-loving owners in mind, almost half of the livable space is outside. Interiors are fully customisable to the owners' desires and will be sure to exemplify Benetti's renowned craftsmanship and quality.

For maximum comfort and enjoyment, 'Iryna' includes roomy relaxation and sunbathing spaces and an outdoor lunch area on

the Main Deck. Additionally, the Main Deck houses an indoor saloon and dining area. A light and airy owners' suite, complete with a private balcony, also lives on this level. The Upper Deck accommodates a spacious gym.

Like the other models in the series, 'Iryna' is a powerhouse designed to sail long journeys without interruption. The superyacht's range of 4,500 nautical miles at 12 knots is what makes this impressive feat possible.

For more superyacht news, [click here](#).

Project Cosmos: 80m Heesen Vessel Hits the Water

The [Heesen](#) Project Cosmos has left the Dutch company's shipyard in Oss. The 80m vessel which weighs 1,700GT vessel can reach a maximum of 30 knots. Because of this, it is the biggest and fastest all-aluminium yacht ever made.



Credit: Dick Holthuis

The superyacht's great size and high speed are what makes her so impressive. Due to a low-drag hull design based on Van Oossanen's Fast Displacement Hull Form, and the skills of Heesen's naval architects, this was achieved. The yacht is powered by traditional diesel propulsion, consisting of four engines, two gearboxes, variable-pitch propellers and innovative Promas rudders.



Credit: Dick Holthuis

"Today, we are celebrating the launch of a unique yacht," states Heesen CEO Arthur Brouwer. "Unique not only for our shipyard, as she is the largest we have ever taken on and represents the pinnacle of our achievements to date. Cosmos is also unique in the industry – the largest and fastest aluminium yacht in her class ever built."



Credit: Dick Holthuis

[Winch Design](#) has crafted a beautiful exterior, with clean lines, a sporty look and extensive use of glass creating a timeless profile. The light and calming interior design was penned by [Sinot Yacht Design](#). A neutral palette, with accents of blue hues, help achieve a relaxing environment that helps guests feel immediately at home.

<https://www.instagram.com/p/CWljlfbsZdU/>

Project Cosmos will remain at Heesen following her launch for commissioning. She will undergo intense sea trials in the North Sea in February 2022 before an April 2022 delivery.

[Click here](#) for more superyacht news.

58.5m Superyacht PHI Stuns During Sea Trials

[Royal Huisman's](#) superyacht PHI has been spotted reaching 20+ knots during its North Sea trials. The 58.5m vessel, which weighs below 500GT, is the longest yacht in its category worldwide.



Credit: Tom Van Oossanen

The vessel's sea trials come after her departure from the Dutch company's Vollenhove shipyard in October, and making her way to Royal Huisman Amsterdam.

Speaking of working with Royal Huisman, Guy Booth, Project Manager of PHI commented: "With such a powerful vision, a

demand for the absolute highest level of quality available anywhere and such difficult engineering challenges, Royal Huisman were the best partner to build the boat.”

Interior design comes from the creative vision of London-based studio [Lawson Robb](#). The design takes huge inspiration from outer space, however further details of the vessel’s interior are currently under wraps. The original idea was born through many conversations between the concept’s creator [Cor D. Rover](#) and the owner over the years. The ethereal inspiration will be apparent whilst navigating the yacht’s three decks which have three themes: the galaxy, the ocean surface, and the underwater world.



Credit: Tom Van Oossanen

Phi will have the capacity to accommodate up to 12 guests, whilst also housing 11 crew members.



Above from left to right: Cor D. Rover, owner's representative and project manager Guy Booth, the Royal Huisman team, Perry van Oossanen. Credit: Tom Van Oossanen

For all the latest superyacht news [click here](#)

Heesen Sparta: Construction Continues on 67m Superyacht

Construction is advancing on the 67m [Heesen](#) superyacht Sparta, with the joining of her steel hull and aluminium superstructure. This step moves the project further towards her 2023 delivery.



Credit: Heesen

During a three-day-long process, the hull was lowered into the water for the first time before being towed to Oss. Here, Sparta received her two MTU 12V4000 M65R diesel engines and gearboxes. Following this, her hull and superstructure were joined together. She is now awaiting her outfitting and interior fit-out.

Both external and internal designs come courtesy of London-based [Winch Design](#). Distinguished by bold curves, dramatic window shapes, and an inviting stern area, the seamless connection of outdoor and indoor spaces is a haven for relaxation and family life.

The vessel's layout is a reflection of the lifestyle of the owner and their family. With wellness being a priority, her lower deck is will include a jacuzzi, sauna, steam room and gym. The lower deck will also house crew quarters and the galley. Elsewhere on the superyacht will be four double guest cabins and a full-beam saloon, all located on the main deck. The owner has reserved the upper deck for private use, with suites facing forward and aft.



Credit: Heesen

“The production of full-custom yachts is a challenge we always undertake with great enthusiasm at Heesen,” states Heesen CEO Arthur Brouwer. “Their construction embodies the personality of their owners and offers us the opportunity to demonstrate the incredible levels of excellence our teams can achieve. Working with Winch Design is always a great pleasure, and we look forward to seeing this yacht in all her splendour two years from now.”

For more superyacht news, [click here](#).

Immersive Superyacht Design: An Interview with Tommy Lexen and John Munro

[Immersive](#) is an innovation-driven visual art company and design specialist that can transform any space, from global events to intimate private spaces. They've worked with some of the world's most significant events and international brands, such as the London Olympic Games, FIFA World Cup and BMW. With expertise in custom luxury design, they are looking to make their mark on the superyacht industry. Today we chatted with John Munro and Tommy Lexen of the cutting-edge design company.

Tell us a bit about yourself and your time at Immersive?

John Munro CEO (JM): After studying Architecture, Design Theory and Fine Art, I created Immersive to begin a creative movement into large scale spatial storytelling. I founded the studio in 2004 when Experiential Art and Design was just starting to grow as an industry. We were pioneers of the industry, creating projection mapping before it was even called projection mapping. At Immersive, I have been lucky enough to direct all projects creatively. I have had the fantastic support of an incredible team that embodies the forward-thinking spirit of the company.



John Munro, CEO at Immersive

Tommy Lexen MD (TL): I joined Immersive in the summer of 2019 as the Head of Studio and Executive Creative Director. This January, I moved into my role as the Managing Director. Creatively, I've led the studio's work for the Mobility Pavilion in Expo 2020, amongst other projects. We've also been busy tailoring our skillset for private commissions with the luxury market and growing our presence in London and at our satellite studios around the world. My career has always focused on using innovations to tell engaging stories with world-class artists, so working on Immersive's varied projects and sitting at the cutting-edge of innovations in this industry is a culmination of that work.



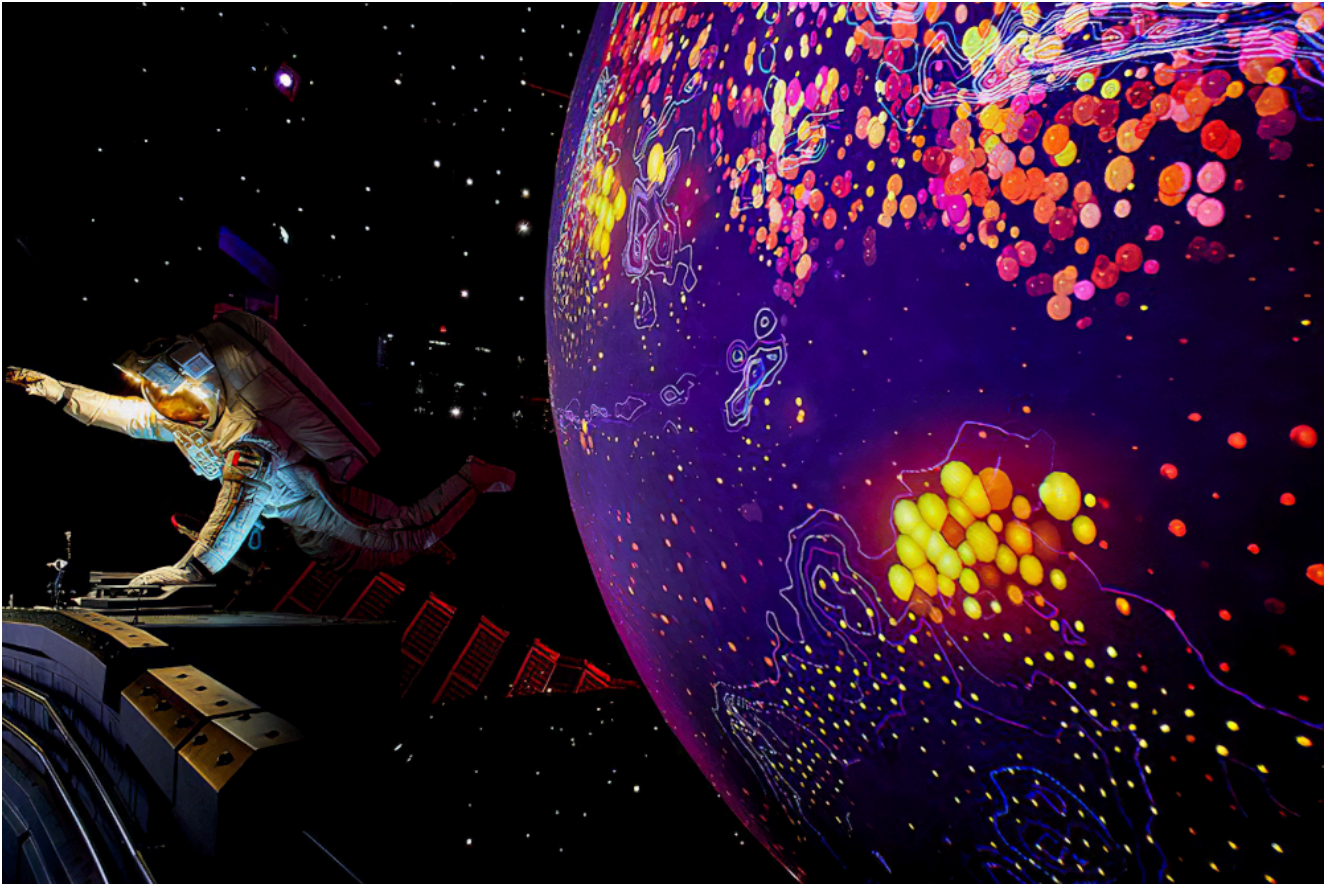
Tommy Lexen, Managing Director at Immersive

What has been Immersive's largest project to date?

TL: The [Mobility Pavilion](#) at the 2020 Dubai Expo! The Mobility Pavilion is the biggest thematic pavilion at the event. Designed by Foster + Partners, it houses a three-act immersive theatrical environment that explores stories of mobility in the past, present, and future. We directed, designed, and delivered the experiential media and content across nine installations for the second and third acts. We wanted to make the world's greatest show and deliver cutting-edge experiences visitors have never experienced before. It's been so exciting to see it open to the public after COVID-related delays.

JM: I agree with Tommy. We directed, designed, and delivered the experiential media and content across nine installations for the second and third acts, working in close collaboration with the brilliant team from EXPO 2020, MET Studio and ALEC Fitout. Creating the 'Stadium Screen' for the London 2012 Opening and Closing Ceremonies was our largest project,

dimension wise. Our largest permanent installation was produced for Comcast with Steven Spielberg and installed in their reception, next to a Jenny Holzer artwork and a Conrad Shawcross installation.



Dubai Expo 2020

What led Immersive to the superyacht industry?

TL: In recent years, the luxury market has been offering higher levels of exclusivity and customisation to its clients. Also, the evolution of immersive and CreaTech industries are creating massive potential for bespoke luxury experiences. More and more, we see traditional methods of displaying artworks or screening narrative-driven content becoming redundant – people seek intimate, multidimensional environments that uniquely respond to them and transport them beyond the everyday. What we've seen as a result is clients commissioning Immersive to apply our unique skill set and

creativity to custom luxury projects.

JM: The superyacht industry is known for artistic innovation of the highest quality. Immersive has been at the forefront of bespoke installations that are future proof and stand the test of time. Our technology is a perfect fit with the demand for exclusivity and customisation within the superyacht industry.

How closely do you work with the owner on the brief? Also, do their needs and wants to dictate the project?

TL: The individual tastes of the owner informs all the decisions made. Each Immersive design is entirely bespoke, resulting in a one-of-a-kind experience tailored to their artistic tastes and how they envision their life on the superyacht. We work collaboratively with the whole project team to bring the experience to life. Interior designers, shipyards, project management and operational teams, technical teams, and suppliers are all part of the process.

<https://www.instagram.com/p/CUfC6cmNhxz/>

What are the unique challenges you have faced during the design and installation process on a superyacht compared to home installation?

TL: Every project has unique challenges, especially when it's a permanent installation. We have expertise in designing for the unique spatial aspects of complex environments. Often, in

our commercial work, they are huge scale venues or outdoor installations. However, with superyachts, there are different factors. Designing for smaller, more intimate, and much more personal environments are some of these.

Of course, yachts aren't static, so we must plan for the experience to work no matter where it is! This applies to connectivity and also the potential issue of being offline. We ensure there is a Minimum Viable Product approach available. This assures that the core function of the environment can still operate in some capacity, even with technical issues.

Issues with access to superyachts have also arisen; however, we use virtual prototyping. This allows us to test every aspect of our work before we are physically on board.

Do you work closely with the crew to ensure the equipment going on board is easy to manage and maintain?

TL: Absolutely! Ensuring the yacht crew know how to manage any issues that may arise after they set sail is vital. We make sure they have the specialist knowledge or specific training as a part of our holistic project development.

Specific details of Immersive's upcoming projects are confidential at this time. [Watch out for any updates.](#)

Ragnar: A Tour of the Mighty 68m Explorer Superyacht

Named after the legendary Viking 'Ragnar Lothbrok', this explorer superyacht is undoubtedly the queen of the seas. From her 6,000 nautical mile range to her full ice-breaking functionality, Ragnar is unlike any other.

Guests who charter [Ragnar](#) are in for an exhilarating experience, travelling through Nordic weather conditions whilst enjoying all the luxuries on board. We're taking you on a top-to-bottom journey of the unique vessel, from sky lounge to toys and tenders.



Sun Deck

Starting our tour on the very top, we can find an expansive outdoor living space. It's a place of tranquillity where guests can relax in the jacuzzi whilst enjoying the far-reaching views seen from atop the superyacht. Additionally, there is a bar and barbecue and plenty of seating areas to kick back and relax.



The top deck and jacuzzi. Credit: Burgess Yachts

Bridge Deck

In its design, Ragnar evokes a sense of classic exploration created by design studio [RWD](#). The sky lounge is perhaps the greatest example of this aesthetic. With wooden panels and chesterfield furniture, it has a classic masculine appeal akin to decor found in traditional smoking rooms. It creates a warm and intimate space that provides a stark contrast to the arctic conditions outside.



Sky Lounge. Credit: Burgess Yachts



The lounging area on A-deck. Credit: Burgess Yachts

Upper Deck

Descending to the vessel's upper deck, we can find two luxurious master suites. Complimenting the gorgeous bedrooms are lounging areas and en-suites, which incorporate themes found elsewhere on the superyacht. The wooden tub adds luxury and is in keeping with the interior throughout the vessel.



One of two master suites on Ragnar. Credit: Burgess Yachts.



The upper deck is also home to a spacious observation lounge, perfect for experiencing the wild weather of the icy seas from the comfort of a warm couch.



The observation lounge. Credit: Burgess Yachts.

Main Deck

The main deck is where we find the main saloon and formal dining area on Ragnar. It is a beautiful area that you could mistake for a grand country manor. Like the sky lounge, the decor and design choices are classic and create a sense of luxury and comfort. The rich, warm textures and colours help Ragnar feel cosy, which helps combat the chill.



The main saloon. Credit: Burgess Yachts.



Ragnar's formal dining area. Credit: Burgess Yachts.

The outside space accommodates a more casual dining/lounging area and a luxurious pool.



Main deck dining and lounging. Credit: Burgess Yachts.

The Facilities

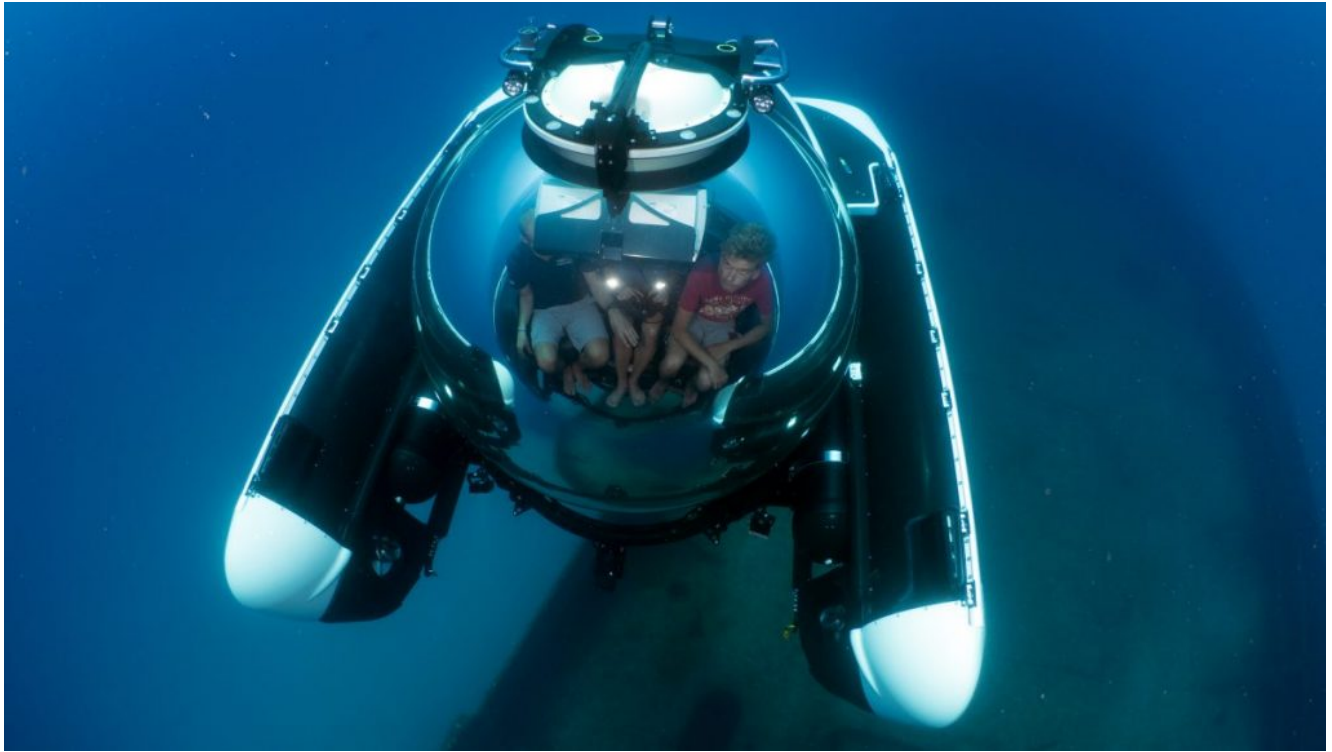
In addition to the many impressive spaces throughout the superyacht, Ragnar also has other luxurious facilities guests are free to enjoy. A large, fully equipped gym is always an important addition, whilst spa facilities such as a sauna and steam and massage rooms provide rest after a long day of exploration. Further amenities include a helipad and guest suites to accommodate an additional eight visitors.



Ragnar's spa facilities. Credit: Burgess Yachts.

Toys and Tenders

Perhaps the most exhilarating option for guests is to dive deep underwater with the [U-Boat Work C-Explorer Submarine](#). The lithium-ion battery powerhouse submerges up to five people in depths of up to 300m. The submarine is an explorer's dream, allowing guests to explore the deep, icy waters of Northern Europe and Antarctica.



There are plenty of options for guests that would rather have fun above sea level too. From [Seadoos](#) to heliskiing with the Airbus EC145 helicopter, there will never be a dull moment for any thrill-seekers.



However, for guests wanting to experience the water more peacefully, there are paddle boards and inflatables to enjoy.

When it comes to land exploration, Ragnar is in her element with [Lynx Snowmobiles](#) and [Big Bo](#), an all-terrain vehicle that makes light work exploring even the most treacherous conditions.



With all this available, along with the stunning living space and facilities on board, it's easy to see what makes Ragnar so unique. The superyacht is currently available for charter through [Burgess Yachts](#).